

Conversa User Guide



Copyright © 2016-2018 Maxprograms

Table of Contents

Introduction	1
Conversa DITA Publisher	1
Publishing DITA Maps	2
Publish DITA Map Dialog	2
Useful Tips	2
Configuration	4
Preferences Dialog	4
External Tools	4
XML Catalog	4
XSL Stylesheet Parameters	5
Common Parameters	5
XSL-FO Parameters	11
Page headers and footers	19
HTML Parameters	22
EPUB Parameters	27
Help Parameters	27
Common Help Parameters	28
Web Help Parameters	28
HTML Help Parameters	32
Eclipse Help Parameters	32
Index	i

Introduction

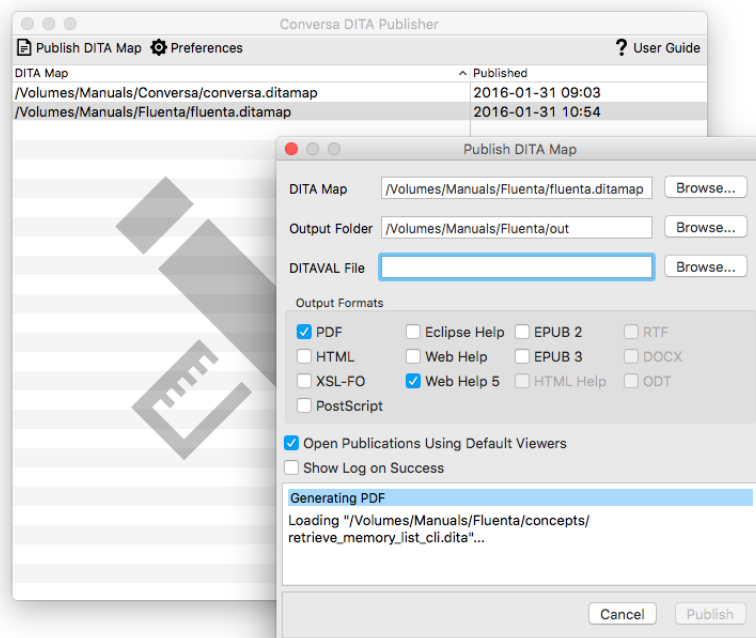
Conversa DITA Publisher

Conversa provides a graphical user interface to the free [DITA Converter \(ditac\)](#) from XMLmind that you can use to easily publish your DITA projects in multiple formats.

Conversa works right out of the box. Just install it and generate PDF, HTML or Web Help from your DITA files using the default configuration.

The output formats supported by Conversa are:

PDF	HTML	EPUB 2 & 3	PostScript
Eclipse Help	Web Help	Web Help with HTML 5	XSL-FO
HTML Help	RTF	DOCX	ODT



Conversa ships with Apache FOP 2.2 to generate PDF files but you can also use [RenderX XEP](#), [Antenna House XSL Formatter](#) or an external Apache FOP if you want customized PDF files.

Microsoft HTML Help Workshop is required to generate HTML Help in .chm format for Windows. It can be freely downloaded from [Microsoft's Download Center](#).

XMLmind XSL-FO Converter is used to generate DOCX, RTF and ODT output from DITA files. XSL-FO Converter is a commercial product from [XMLMind](#).

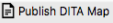
Publishing DITA Maps

Publish DITA Map Dialog

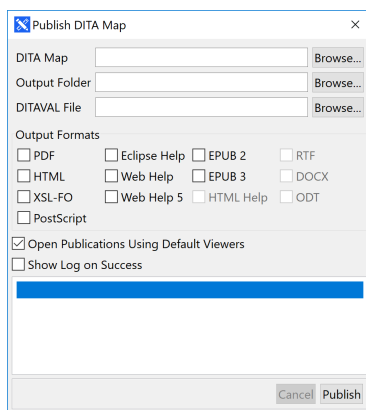
About this task

Steps for publishing a DITA Map in multiple formats.

Procedure

1. In **File** menu select **Publish DITA Map** or click the  button in the toolbar.

The following dialog appears:



2. Type the name of the DITA map that you want to publish in the **DITA Map** text box or use the **Browse...** button to select a DITA map from the file system.
3. Type the location of the folder where you want the published files to be stored in the **Output Folder** text box or click the **Browse...** button to select a folder from the file system.
4. If you want to use conditional processing when publishing, enter the name of the DITAVAL file in the **DITAVAL File** text box or click the **Browse...** button to select the DITAVAL file from the file system.
5. Select the desired formats by checking the options in the **Output Formats** panel.
6. Check the **Open Publication Using Default Viewers** check box if you want to automatically open the published document right after generating it.
7. Check the **Open Log on Success** check box if you want to examine the information generated by the program even if publication is successful.
8. Click the **Publish** button to start converting the DITA map to all selected formats.

Results

All requested publications are saved in subfolders of the folder indicated **Output Folder** text box. The names of the subfolders reflect the publication format,

Useful Tips

Adding Bookmarks to PDF

Set the `pdf-outline` parameter to `yes` in the **XSL-FO** section of the **XSL Parameters** tab of the **Preferences** dialog to add bookmarks in PDF output.

Paper Size

Default paper size for PDF, RTF, DOCX and ODT is 'A4'. Paper size used in formats that depend on XSL-FO is controlled by the `paper-type` parameter in the stylesheet for XSL-FO.

Eclipse Help for Multiple Plugins

XSL settings can only contain the information of one plugin at a time. Save your current set of XSL parameters using the **Export XSL Parameters** option of the **XSL Parameters** tab of the **Preferences** dialog after configuring each plugin and load those settings using the **Import XSL Parameters** button before publishing the corresponding Eclipse help.

Configuration

Preferences Dialog

Conversa default settings can be changed in the **Preferences** dialog.

- To open the **Preferences** dialog on Windows or Linux, select **Preferences** in **Settings** menu.
- To open the **Preferences** dialog on Mac OS X, select **Preferences** in Apple menu.

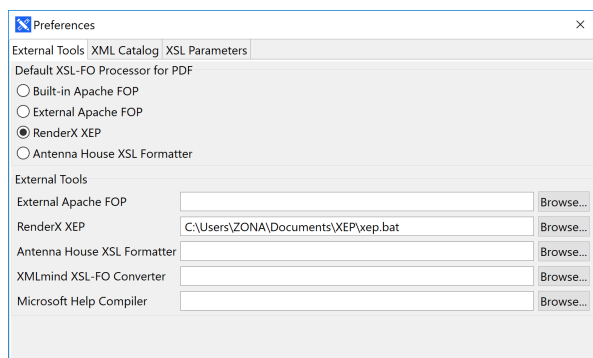
External Tools

Default XSL-FO Processor for PDF

Conversa generates XSL-FO files that can be converted to PDF format using the following XSL transformation engines:

- Built-in Apache FOP 2.2
- External Apache FOP
- Antenna House XSL Formatter
- RenderX XEP

Use the **External Tools** tab of the **Preferences** dialog to configure the default XSLT engine.



External Tools

If you want to generate PDF using XSLT engines other than the built-in Apache FOP, you must indicate the paths to the XSLT engine executables in the corresponding text boxes. Use the appropriate **Browse...** button to locate the executables in the file system.

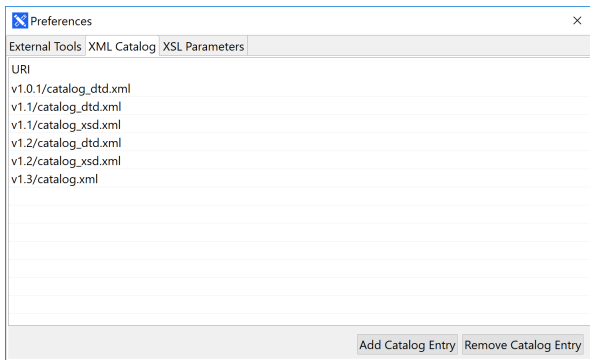
XMLmind XSL-FO converter is required to generate RTF, DOCX or ODT files from a DITA map. Enter the location of `fo2rtf.bat` (Windows) or `fo2rtf` (Mac OS X or Linux) in the **XMLmind XSL-FO Converter** text box or use the corresponding **Browse...** button to locate the program in the file system.

Microsoft Help Compiler is required to generate Html Help (Windows help) using conversa. Enter the location of `hhc.exe` in the **Microsoft Help Compiler** text box or use the **Browse...** button next to it to select the location from the file system.

XML Catalog

The application includes a default XML catalog with DTDs and XML Schemas for the most relevant formats and supported document types. Additional DTDs and XML Schemas can be added by the user as needed.

Select the **XML Catalog** tab in the **Preferences** dialog to add or remove entries from the catalog.



Add Catalog Entry

Click the **Add Catalog Entry** button and a file selection dialog will appear. Locate the catalog in the file system and select it.

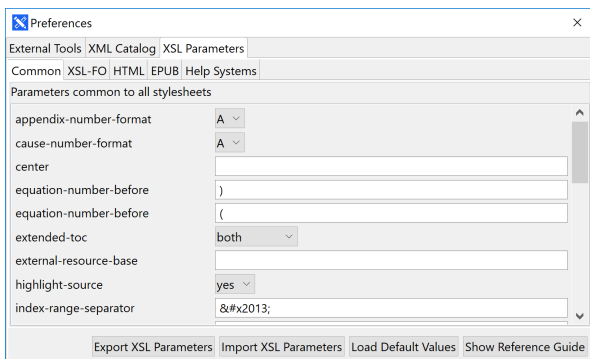
Remove Catalog Entry

Select the catalog entry to remove in the catalogs table. Click the **Remove Catalog Entry** button and the application's catalog will be updated to reflect the change.

XSL Stylesheet Parameters

You can pass parameters to the XSL stylesheets shipped with Conversa to customize the appearance of your publications.

Select the **XSL Parameters** tab in the **Preferences** dialog to adjust your stylesheets.



Use the **Export XSL Parameters** button to save the current set parameters to an XML file and the **Import XSL Parameters** button to restore a set of customized settings at any time.

The **Load Default Values** button restores the default values for all parameters in all stylesheets. Use this option if you made a configuration mistake or want to reset all settings at once.

The **Show Reference Guide** button opens a separate window showing this chapter in a Web Help version of this user guide.

Common Parameters

The parameters described below apply to all XSL styleheets used by Conversa.

Parameter	Value	Description
appendix-number-format	Allowed values are: 'I', 'i', 'A', 'a', '1'. Default value: 'A'.	The number format of topics referenced in a bookmap as <code>appendix</code> . By default, such topics are numbered as follows: Appendix A. Title of first appendix , Appendix B. Title of second appendix , etc.
cause-number-format	Allowed values are: 'I', 'i', 'A', 'a', '1'. Default value: 'A'.	In a <code><troubleshooting></code> topic, multiple <code><remedy></code> elements having no title are given numbers formatted using this format.
center	List of element names separated by whitespace. Example: 'fig simpletable table'. Default value: ''.	Specifies which elements are to be centered horizontally on the page.
extended-toc	Allowed values are: 'frontmatter', 'backmatter', 'both', 'none'. Default value: 'none'.	Allows to add frontmatter and backmatter topicrefs to the Table of Contents (TOC) of a document. Note that the <code>toc</code> , <code>navtitle</code> , <code>locktitle</code> , etc, attributes are applied normally to frontmatter and backmatter topicrefs when an extended TOC is generated.
equation-number-after	String. Default value: ') '.	Text added after the contents of a <code><equation-number></code> element.
equation-number-before	String. Default value: '('.	Text added before the contents of a <code><equation-number></code> element.
external-resource-base	Allowed values are: '', an URL ending with "/" or '#REMOVE'. Default value: '#REMOVE' for EPUB 2 and EPUB 3, '' for all the other output formats.	Specifies how to resolve <code>xref</code> or <code>link</code> elements having an <i>external</i> scope attribute and a <i>relative</i> href attribute. Example of such <code>xref</code> elements: <code><xref scope="external" format="java" href="src/Test.java">Test.java</xref></code> . '' Do not resolve the href attribute. In this case, the external resource files are expected to be copied “by hand” to the output directory. An URL ending with "/" This URL is prepended to the value of the href attribute. '#REMOVE' The <code>xref</code> or <code>link</code> element is processed as if it did not have an href attribute.
highlight-source	Allowed values are: 'yes' and 'no'.	Allows to turn off syntax highlighting in elements specializing <code>pre</code> .

Parameter	Value	Description
	Default value: 'yes'.	By default, syntax highlighting is turned on for all elements specializing <code>pre</code> and having an <code>outputclass</code> attribute equals to <code>language-c</code> , <code>language-cpp</code> , <code>language-csharp</code> , <code>language-delphi</code> , <code>language-ini</code> , <code>language-java</code> , <code>language-javascript</code> , <code>language-m2</code> , <code>language-perl</code> , <code>language-php</code> , <code>language-python</code> , <code>language-ruby</code> , <code>language-tcl</code> .
<code>index-range-separator</code>	String. Default value: <code>'&#x2013;'</code> (END DASH).	The string used to separate the first page number from the last page number in a page range of an indexed term. Example: <code>index-range-separator='<-->'</code> : <div style="background-color: #f0f0f0; padding: 5px; border: 1px solid #ccc;"> <pre>c Cat 54, 87<-->90</pre> </div>
<code>link-auto-text</code>	List of values separated by whitespace. Allowed values are: 'number' and 'text'. Default value: 'number text'.	This parameter specifies which text to generate for a <code>link</code> element, when this <code>link</code> element has no <code>link-text</code> child element or when this <code>linktext</code> child element is empty. Similar to above parameter <code>xref-auto-text</code> but for <code>link</code> elements.
<code>note-icon-list</code>	List of <code>type</code> attribute values separated by whitespace. Default value: 'attention caution danger fastpath important note notes remember restriction tip'.	Specifies the <code>type</code> (attribute <code>type</code>) of the <code>note</code> elements for which icons should be used rather than text in order to represent note labels. Ignored unless <code>use-note-icon='yes'</code> .
<code>number</code>	List of values separated by whitespace. Allowed values are: 'topic', 'chapter-only', 'table', 'fig', 'example', 'all'. Default value: '' (number nothing).	Specifies which elements are to be numbered. 'all' is a short form for 'topic table fig'. 'chapter-only' means: number topics, but only those referenced in a bookmap as part, chapter and appendix. Note Please note that 'all' does not include 'example'. If you want to number all formal elements including examples, then you must specify 'all example'.
<code>number-separator1</code>	String. Default value: '.'.	The string used to separate the hierarchical number of topics acting as sections.

Parameter	Value	Description
number-separator2	String. Default value: '- '.	The string used to separate the hierarchical number of figures, tables and examples. When possible, the number of figure, table or example is made relative to the number of the ancestor chapter or appendix. This gives for example (for descendants of chapter 5): Figure 5-1. Title of first figure of chapter 5 , Figure 5-2. Title of second figure of chapter 5 , etc.
mark-important-steps	Allowed values are: 'yes' and 'no'. Default value: 'no'.	Generates a "Required" (respectively "Optional") label for <code>step</code> and <code>substep</code> elements having an importance attribute set to "required" (resp. "optional").
part-number-format	Allowed values are: 'I', 'i', 'A', 'a', '1'. Default value: 'I'.	The number format of topics referenced in a bookmap as <code>part</code> . By default, such topics are numbered as follows: Part I. Title of first part , Part II. Title of second part , etc.
prepend-chapter-to-section-number	Allowed values are: 'yes' and 'no'. Default value: 'no'.	Normally topics which are descendants of chapters (that is, topics referenced in a bookmap as <code>chapter</code>) are numbered as follows: 1. Title of first section , 1.1. Title of first subsection , etc. Specifying <code>prepend-chapter-to-section-number='yes'</code> prepends the number of the chapter ancestor to the section number. This gives for example (for descendants of chapter 5): 5.1. Title of first section , 5.1.1. Title of first subsection , etc.
remedy-number-format	Allowed values are: 'I', 'i', 'A', 'a', '1'. Default value: 'A'.	In a <code><troubleshooting></code> topic, multiple <code><remedy></code> elements having no title are given numbers formatted using this format.
show-draft-comments	Allowed values are: 'yes' and 'no'. Default value: 'no'.	Specifies whether <code>draft-comments</code> elements should be rendered.
troubleSolution-number-format	Allowed values are: 'I', 'i', 'A', 'a', '1'. Default value: '1'.	In a <code><troubleshooting></code> topic, multiple <code><troubleSolution></code> elements having no title are given numbers formatted using this format.
text-file-encoding	An encoding name such as UTF-8 or ISO-8859-1. Default value: ''.	Encoding of the text file referenced by <code>coderef/@href</code> . An empty string means: to be determined automatically.
title-after	List of element names separated by whitespace. Example: 'fig table'.	Specifies which elements should have their titles displayed after their bodies.

Parameter	Value	Description
	Default value: ' '.	
title-page	<p>Allowed values are: 'auto', 'none' or the URI of a custom title page.</p> <p>Default value: 'auto'.</p>	<p>Specifies the kind of "title page" (contains the title of the document, its author, etc) to be generated before the actual contents of the document.</p> <p>'auto' Automatically generate a title page based on the title and metadata of the map.</p> <p>'none' Do not generate a title page.</p> <p>URI of a custom title page Specifies the URI of a custom title page. If the URI is relative, it is relative to the current working directory of the user.</p> <p>This custom title page is an XHTML file for XHTML-based formats (XHTML, HTML Help, etc). This custom title page is an XSL-FO file for FO-based formats (PDF, RTF, etc). Such custom title pages are generally handwritten.</p> <ul style="list-style-type: none"> The child nodes of the <code>body</code> element of the custom XHTML title page are wrapped in a <code>div</code> contained in the XHTML/HTML file being generated by the XSLT stylesheet. <p>Do not add a <code><!DOCTYPE></code> to such custom XHTML title page because otherwise, the XSLT stylesheet may fail loading it.</p> <p>See <code>docs/samples/titlepage.xhtml</code> sample custom XHTML title page.</p> <ul style="list-style-type: none"> The child nodes of the first <code>fo:flow[@flow-name='xsl-region-body']</code> element of the custom XSL-FO title page are wrapped in a <code>fo:block</code> contained the XSL-FO file being generated by the XSLT stylesheet. <p>See <code>docs/samples/titlepage.fo</code> sample custom XSL-FO title page.</p>
title-prefix-separator1	<p>String.</p> <p>Default value: ' '.</p>	<p>The string used to separate the number of a formal object from its title.</p>

Parameter	Value	Description
<code>use-note-icon</code>	Allowed values are: 'yes' and 'no'. Default value: 'no'.	Specifies whether icons should be used rather than text in order to represent the label of a <code>note</code> element.
<code>watermark-image</code>	URI. If the URI is relative, it is relative to the current working directory of the user. No default value.	Specifies an image file which is to be used as a watermark in all the pages comprising the output document. See also parameter <code>watermark</code> . If you need this feature when generating RTF, DOCX or ODT, please make sure to use XMLmind XSL-FO Converter v5.3+ .
<code>xref-auto-text</code>	List of values separated by whitespace. Allowed values are: 'number' and 'text'. Default value: 'number'.	This parameter specifies which text to generate for an <code>xref</code> element, when this <code>xref</code> element contains no text at all ⁽¹⁾ . Let's suppose that an <code>xref</code> element containing no text at all points to a topic titled "Installation". Because the <code>xref</code> element points to an element having a <code>title</code> child element, ditac may use this title as a starting point for the generated text. Now let's suppose that topics are numbered and that the number of the "Installation" topic is "Chapter 5". The text generated for this <code>xref</code> element is thus: If <code>xref-auto-text='number'</code> Chapter 5 If <code>xref-auto-text='text'</code> Installation If <code>xref-auto-text='number text'</code> Chapter 5. Installation Note that this specification is just a hint because ditac needs anyway to generate some text. For example, if topics are not numbered and <code>xref-auto-text='number'</code> , the generated text will be "Installation".
★ <code>xsl-resources-directory</code>	URL. A relative URL is relative to the output directory. Default value: 'resources/' resolved against the directory which contains the XSLT stylesheets.	Most XSLT stylesheets generate files which reference resources such as icons or CSS stylesheets. This parameter specifies the target directory which is to contain such resources. If this directory does not exist, it is automatically created.

⁽¹⁾This implies that the `xref-auto-text` parameter is ignored when an `xref` element contains some text.

Parameter	Value	Description
		<p>If this directory does not already contain the resources needed by the XSLT stylesheets, such resources are automatically copied to this directory.</p> <p>The default value of this parameter is something like <code>file:/opt/ditac/xsl/xhtml/resources/</code> for the stylesheets generating XHTML. URL <code>file:/opt/ditac/xsl/xhtml/resources/</code> specifies an existing directory containing <code>basic.css</code>, <code>note.png</code>, <code>important.png</code>, etc. This means that by default, no directory is created and no resource is copied.</p> <p>If the value of this parameter is an absolute URI, then ditac assumes that no resource directory is to be created and no resource is to be copied because this has already been done by the user.</p> <p style="text-align: center;">Important</p> <ul style="list-style-type: none"> • Explicitly specifying something like <code>xsl-resources-directory='res'</code> is almost <i>always required</i> when generating files having an XHTML/HTML based format (XHTML, HTML Help, etc). • Explicitly specifying something like <code>xsl-resources-directory='res'</code> is almost <i>never required</i> when generating files converted from XSL-FO (PDF, RTF, etc).

XSL-FO Parameters

The XSL-FO file generated by the XSLT stylesheets is converted to PDF, PostScript®, RTF, WordprocessingML, Office Open XML (.docx), OpenOffice/LibreOffice (.odt) by the means of XSL-FO processors such as [Apache FOP](#), [RenderX XEP](#), [Antenna House XSL Formatter](#) or [XMLmind XSL-FO Converter](#).

The following table lists the parameters specific to the stylesheets that generate XSL-FO.

Parameter	Value	Description
<code>base-font-size</code>	Default value: '10pt'.	The size of the "main font" of the document. All the other font sizes are computed relatively to this font size
<code>body-bottom-margin</code>	Length. Default value: '0.5in'.	See Page areas below.

Parameter	Value	Description
body-font-family	A string containing one or more font families separated by commas. Default value: 'serif'.	Specifies the family of the font used for the text of all elements except topic titles.
body-top-margin	Length. Default value: '0.5in'.	See Page areas below.
choice-bullets	A string containing one or more single characters separated by whitespace. Default value: '•' (BULLET).	Specify which bullet character to use for a choice element. Additional characters are used for nested choice elements. Changing the value of this parameter may imply changing the font-family attribute of the attribute-set choice-label.
equation-block-equation-width	Length. Default value: '90%'.	In a numbered <equation-block> element, this parameter specifies the width of the column containing the equation.
equation-block-number-width	Length. Default value: '10%'.	In a numbered <equation-block> element, this parameter specifies the width of the column containing the <equation-number> element.
external-href-after	String. Default value: '] '.	Appended after the external URL referenced by an xref or link element. Ignored unless show-external-links='yes'.
external-href-before	String. Default value: ' ['.	Separates the text of an xref or link element from its referenced external URL. Ignored unless show-external-links='yes'.
footer-center	String.	Specifies the contents of the central part of a page footer. See Specifying a header or a footer . Supports a conditional specification . Default value: <pre>two-sides even:: {{chapter-title}};; two-sides part chapter appendices appendix odd::- {{section1-title}};; one-side even odd:: {{chapter-title}}</pre>
footer-center-width	String representing an integer larger than or equal to 1.	Specifies the proportional width of the central part of a page footer. See Specifying a header or a footer .

Parameter	Value	Description
	Default value: '6'.	Supports a conditional specification .
footer-height	Length. Default value: '0.4in'.	See Page areas below.
footer-left	String. Default value: <pre>two-sides even:: {{page-number}}</pre>	Specifies the contents of the left part of a page footer. See Specifying a header or a footer . Supports a conditional specification . Default value: <pre>two-sides even:: {{page-number}}</pre>
footer-left-width	String representing an integer larger than or equal to 1. Default value: '2'.	Specifies the proportional width of the left part of a page footer. See Specifying a header or a footer . Supports a conditional specification .
footer-right	String. Default value: <pre>two-sides first odd:: {{page-number}};; one-side:: {{page-number}}</pre>	Specifies the contents of the right part of a page footer. See Specifying a header or a footer . Supports a conditional specification . Default value: <pre>two-sides first odd:: {{page-number}};; one-side:: {{page-number}}</pre>
footer-right-width	String representing an integer larger than or equal to 1. Default value: '2'.	Specifies the proportional width of the right part of a page footer. See Specifying a header or a footer . Supports a conditional specification .
footer-separator	Allowed values are: 'yes' and 'no'. Default value: 'yes'.	Specifies whether an horizontal rule should be drawn above the page footer.
header-center	String. Default value: '{{document-title}}'.	Specifies the contents of the central part of a page header. See Specifying a header or a footer . Supports a conditional specification .
header-center-width	String representing an integer larger than or equal to 1. Default value: '6'.	Specifies the proportional width of the central part of a page header. See Specifying a header or a footer . Supports a conditional specification .

Parameter	Value	Description
header-height	Length. Default value: '0.4in'.	See Page areas below.
header-left	String. Default value: ''.	Specifies the contents of the left part of a page header. See Specifying a header or a footer . Supports a conditional specification .
header-left-width	String representing an integer larger than or equal to 1. Default value: '2'.	Specifies the proportional width of the left part of a page header. See Specifying a header or a footer . Supports a conditional specification .
header-right	String. Default value: ''.	Specifies the contents of the right part of a page header. See Specifying a header or a footer . Supports a conditional specification .
header-right-width	String representing an integer larger than or equal to 1. Default value: '2'.	Specifies the proportional width of the right part of a page header. See Specifying a header or a footer . Supports a conditional specification .
hyphenate	Allowed values are: 'yes' and 'no'. Default value: 'no'.	Specifies whether words may be hyphenated.
index-column-count	Positive integer. Default value: '2'.	The number of columns of index pages.
index-column-gap	Length. Default value: '2em'.	The distance which separates columns in index pages.
justified	Allowed values are: 'yes' and 'no'. Default value: 'no'.	Specifies whether text (e.g. in paragraphs) should be justified (that is, flush left and right) or just left aligned (that is, flush left and ragged right).
link-bullet	A string containing a single character. Default value: '•' (BULLET).	Specify which character is inserted before the text of a link element. Changing the value of this parameter may imply changing the <code>font-family</code> attribute of the attribute-set <code>link-bullet</code> .
menucascade-separator	A string containing a single character.	Specify which character is used to separate the child elements of a menucascade element.

Parameter	Value	Description
	Default value: '→' (RIGHTWARDS ARROW).	Changing the value of this parameter may imply changing the <code>font-family</code> attribute of the attribute-set <code>menucascade-separator</code> .
<code>note-icon-height</code>	Length. A length may have a unit. Default is <code>px</code> . Default value: <code>'32'</code> . <code>'7mm'</code> for the XSLT stylesheets that generate XSL-FO.	The height of a note icon.
<code>note-icon-suffix</code>	Default value: <code>' .png '</code> .	The suffix of a note icon. The root name of a note icon should be identical to the value of the <code>type</code> attribute it represents. For example, if <code>note-icon-suffix= '.svg'</code> , the default resources directory is expected to contain <code>note.svg</code> , <code>important.svg</code> , <code>caution.svg</code> , etc. In principle, there is no need for an end-user to specify any of the <code>note-icon-suffix</code> , <code>note-icon-width</code> or <code>note-icon-height</code> parameters.
<code>note-icon-width</code>	Length. A length may have a unit. Default is <code>px</code> . Default value: <code>'32'</code> . <code>'7mm'</code> for the XSLT stylesheets that generate XSL-FO.	The width of a note icon.
<code>page-bottom-margin</code>	Length. Default value: <code>'0.5in'</code> .	See Page areas below.
<code>page-height</code>	Length. Example: <code>'297mm'</code> . Default value: depends on paper-type.	The height of the printed page.
<code>page-inner-margin</code>	Length. Default value: if parameter <code>two-sided</code> is specified as <code>'yes'</code> then <code>'1.25in'</code> otherwise <code>'1in'</code> .	See Page areas below.

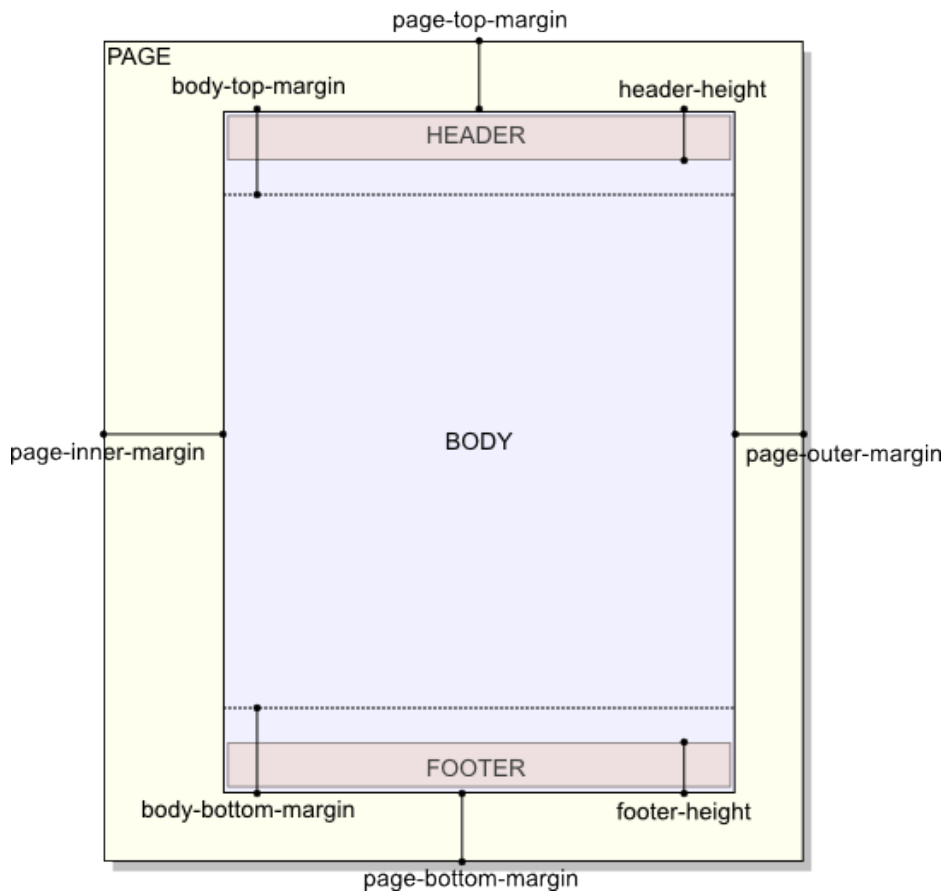
Parameter	Value	Description
page-orientation	Allowed values are: 'portrait' and 'landscape'. Default value: 'portrait'.	The orientation of the printed page.
page-outer-margin	Length. Default value: if parameter <code>two-sided</code> is specified as 'yes' then '0.75in' otherwise '1in'.	See Page areas below.
page-ref-after	String. Default value: ''.	Appended after the page number pointed to by an <code>xref</code> or <code>link</code> element. Ignored unless <code>show-xref-page='yes'</code> or <code>show-link-page='yes'</code> . When both <code>page-ref-after</code> and <code>page-ref-before</code> are specified as the empty string, in fact, this specifies that the generated string must be the localized equivalent of "on page".
page-ref-before	String. Default value: ''.	Separates the text of an <code>xref</code> or <code>link</code> element from the page number it points to. Ignored unless <code>show-xref-page='yes'</code> or <code>show-link-page='yes'</code> .
page-top-margin	Length. Default value: '0.5in'.	See Page areas below.
page-width	Length. Example: '8.5in'. Default value: depends on paper-type.	The width of the printed page.
paper-type	Allowed values are: 'Letter', 'Legal', 'Ledger', 'Tabloid', 'A0', 'A1', 'A2', 'A3', 'A4', 'A5', 'A6', 'A7', 'A8', 'A9', 'A10', 'B0', 'B1', 'B2', 'B3', 'B4', 'B5', 'B6', 'B7', 'B8', 'B9', 'B10', 'C0', 'C1', 'C2', 'C3', 'C4', 'C5', 'C6', 'C7', 'C8',	A convenient way to specify the size of the printed page. It is also possible to specify a custom paper type by ignoring the <code>paper-type</code> parameter and directly specifying the <code>page-width</code> and <code>page-height</code> parameters.

Parameter	Value	Description
	'C9', 'C10' (case-insensitive). Default value: 'A4'.	
pdf-outline	Allowed values are: 'yes' and 'no'. Default value: 'no'.	Specifies whether PDF bookmarks should be generated. Supported by the 'XEP', 'FOP' and 'AHF' XSL-FO processors. Not relevant, and thus ignored by 'XFC'.
show-external-links	Allowed values are: 'yes' and 'no'. Default value: 'no'.	Specifies whether the <i>external URL</i> referenced by an <code>xref</code> or <code>link</code> element should be displayed right after the text contained by this element. Example: <code>show-external-links='yes'</code> causes <code><xref href="http://www.oasis-open.org/">Oasis</xref></code> to be rendered as follows: Oasis [http://www.oasis-open.org/].
show-imagemap-links	Allowed values are: 'yes' and 'no'. Default value: 'yes'.	Specifies whether a numbered list should be generated for an <code><imagemap></code> element, with one list item per <code><area></code> element. A list item contains the link specified by the <code><area></code> element. No list items are generated for “dead areas” (<code><area></code> elements specifying no link at all).
show-link-page	Allowed values are: 'yes' and 'no'. Default value: 'no'.	Same as <code>show-xref-page</code> but for <code>link</code> elements.
show-xref-page	Allowed values are: 'yes' and 'no'. Default value: 'no'.	Specifies whether the page number corresponding to the <i>internal link target</i> referenced by an <code>xref</code> element should be displayed right after the text contained by this element. Example: <code>show-xref-page='yes'</code> causes <code><xref href="introduction.dita">Introduction</xref></code> to be rendered as follows: Oasis [3].
title-color	A string representing a color. Default value: 'black'.	Specifies the color used for the text of topic (of any kind) titles.
title-font-family	A string containing one or more font families separated by commas. Default value: 'sans-serif'.	Specifies the family of the font used for the text of topic (of any kind) titles.

Parameter	Value	Description
two-sided	Allowed values are: 'yes' and 'no'. Default value: 'no'.	Specifies whether the document should be printed double sided.
ul-li-bullets	A string containing one or more single characters separated by whitespace. Default value: '• –' (BULLET, EN DASH).	Specify which bullet character to use for an <code>ul/li</code> element. Additional characters are used for nested <code>li</code> elements. For example, if <code>ul-li-bullets="* - +"</code> , "*" will be used for <code>ul/li</code> elements, "-" will be used for <code>ul/li</code> elements contained in a <code>ul/li</code> element and "+" will be used for <code>ul/li</code> elements nested in two <code>ul/li</code> elements. Changing the value of this parameter may imply changing the <code>font-family</code> attribute of the attribute-set <code>ul-li-label</code> .
unordered-step-bullets	A string containing one or more single characters separated by whitespace. Default value: '•' (BULLET, EN DASH).	Specify which bullet character to use for a <code>steps-unordered/step</code> element. Additional characters are used for nested <code>steps-unordered/step</code> elements. Changing the value of this parameter may imply changing the <code>font-family</code> attribute of the attribute-set <code>unordered-step-label</code> .
use-multimedia-extensions	'yes', 'no' or a list of MIME types separated by whitespace. Default value: 'no'.	Currently ignored unless RenderX XEP is used to generate PDF. Specifies whether vendor-specific XSL-FO extensions should be used to embed rich media content in the output file. If specified value is 'yes', then XSL-FO extensions are used whatever the MIME types of the media. If specified value is a list of MIME types, then XSL-FO extensions are used only for media having these types. For now, it seems that only 'application/x-shockwave-flash' gives useful results. Note This feature requires generating PDF version 1.5+. By default, XEP generates PDF version 1.4. It seems that there is no way to change this by passing a command-line option to <code>xep.bat</code> or to the <code>xep</code> shell script. However, this can be changed once for all, for example by inserting <code><option name="PDF_VERSION" value="1.5"/></code> into the <code><generator-options format="PDF"></code> element found in the <code>XEP_install_dir/xep.xml</code> configuration file.
watermark	Allowed values are one or more of 'blank', 'title', 'toc', 'book-list', 'frontmat-	Specifies which pages in the output document are to be given a watermark. By default, all pages are given a watermark. If for example, parameter <code>watermark</code> is set to 'frontmatter body backmatter',

Parameter	Value	Description
	ter', 'body', 'backmatter', 'index', 'all' separated by whites- pace. Default value: 'all'.	then only the pages which are part of the front matter, body and back matter of the output document are given a watermark. The title page, TOC pages, etc, are not given a watermark. No effect unless parameter <code>watermark-image</code> is specified.

Page areas

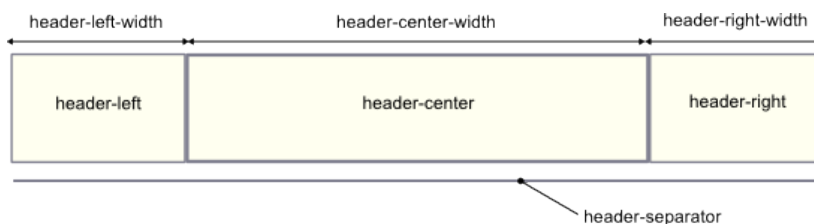


Page headers and footers

Specifying a header or a footer

The header or the footer of a generated PDF, RTF, etc, page has 3 columns.

Layout of a header



The width of these columns may be specified using the `header-left-width`, `header-center-width`, `header-right-width` parameters for the header and the `footer-left-width`, `footer-center-width`, `footer-right-width` parameters for the footer.

The width of a column is specified as an integer which is larger than or equal to 1. This value is the *proportional width of the column*. For example, if the left column has a width equal to 2 and the right column has a width equal to 4, this simply means that the right column is twice ($4/2 = 2$) as wide as the left column.

The contents of these columns may be specified using the `header-left`, `header-center`, `header-right` parameters for the header and the `footer-left`, `footer-center`, `footer-right` parameters for the footer.

When `header-left`, `header-center`, `header-right` are all specified as the empty string, no header is generated. When `footer-left`, `footer-center`, `footer-right` are all specified as the empty string, no footer is generated.

The content of a column is basically a mix of text and variables. Example: "Page `{{page-number}}` of `{{page-count}}`".

Supported variables are:

`{{document-title}}`

The title of the document.

`{{document-date}}`

The publication date of the document.

The value of the variable comes from the last `created` or `revised` element found in the `topicmeta/critdates` or `bookmeta/critdates` element of the map. More precisely, it comes the value of attribute `golive`, `modified` or `date`, considered in that order. The value of this attribute must be something like `YYYY-MM-DD`, because it is parsed and then formatted according to the `xml:lang` of the map. For example, if `golive="2014-02-23"`, with `xml:lang="en"`, it gives: "February 02, 2014" and with `xml:lang="fr"`, it gives: "02 Février 2014". If the map has no `critdates` element, then the current date is used. If the value of attribute `golive`, `modified` or `date` is not specified as `YYYY-MM-DD`, then this value is used as is.

`{{chapter-title}}`

The title of the current part, chapter, appendices or appendix. Empty if the map being converted is not a bookmap.

`{{section1-title}}`

The title of the current part, chapter, appendices or appendix or *section 1*. A section 1 is specified by a non-typed `topicref` (that is, not a part, chapter, preface, appendix, dedication, etc) which is a direct child of a map or bookmap.

`{{topic-title}}`

The title of the current topic. All topics are guaranteed to have a corresponding `{{topic-title}}`. Even automatically generated topics such as `toc` or `indexlist` have a corresponding `{{topic-title}}`⁽²⁾.

`{{page-number}}`

Current page number within the current document division (front matter, body matter or back matter).

`{{page-count}}`

Total number of pages of the current document division (front matter, body matter or back matter).

⁽²⁾The `{{topic-title}}` of a `toc` is "**Table of Contents**", properly localized. The `{{topic-title}}` of a `indexlist` is "**Index**", properly localized.

`{{break}}`

A line break.

`{{image(URI)}}`

An image having specified URI. A relative URI is resolved against the current working directory. Example:
`"{{image(artwork/logo.svg) }}"`.

`{{page-sequence}}`

Not for production use. Inserts in the header/footer the name of the current page sequence . This allows to learn which name to use in a *conditional header or footer*. See [below](#).

Conditional headers and footers

The default value of `header-center` is `'{{document-title}}'`. This means that each page of the generated PDF, RTF, etc, file will have the document title centered on its top. But what if you want the pages containing the Table of Contents have a "**Contents**" header? Is there a way to specify: use "**Contents**" for the pages containing the Table of Contents and use the title of the document for any other page?

This is done by specifying the following conditional value for parameter `header-center`: `'toc:: Contents; ; {{document-title}}'`.

A conditional value may contain one or more cases separated by `;;`. Each case is tested against the page being generated. The first case which matches the page being generated is the one which is selected.

conditional_value --> *case* [`;;` *case*]*

case --> [*condition* `::`]* *value*

condition --> [*test_page_sequence*]?
 & [*S test_page_layout*]?
 & [*S test_page_side*]?

Let's suppose you also want the the pages containing the Index have a "**Index**" header. Specifying `'toc:: Contents; ; {{document-title}}; ; indexlist:: Index'` won't work as expected because the second case (having no condition at all) matches any page, including the Index pages. You need to specify: `'toc:: Contents; ; indexlist:: Index; ; {{document-title}}'`.

Let's remember that variable `{{topic-title}}` is substituted with the title of the current topic, including automatically generated topics such `toc` and `indexlist`.

Therefore our conditional value is better expressed as: `'toc:: indexlist:: {{topic-title}}; ; {{document-title}}'`. Notice how a case may have several conditions. Suffice for any of these conditions to match the page being generated for the case to be selected.

Even better, specify `'toc|indexlist:: {{topic-title}}; ; {{document-title}}'`. String `"|"` may be used to separate alternative values to be tested against the page being generated.

test_page_sequence --> *page_sequence* [`"|"` *page_sequence*]*

page_sequence --> `"abbrevlist" | "amendments" | "appendices" | "appendix"`
`| "backmattersection" | "bibliolist" | "bookabstract" | "booklist"`
`| "chapter" | "colophon" | "dedication" | "draftintro"`
`| "figurelist" | "glossarylist" | "indexlist" | "notices"`
`| "part" | "preface" | "section1" | "tablelist"`
`| "toc" | "trademarklist"`

Tip

It's not difficult to guess that the name of the page sequence corresponding to the Table of Contents is `toc` and that the name of the page sequence corresponding to the Index is `indexlist`. However the simplest way to learn what is the name of the page sequence being generated is to reference variable `{{page-sequence}}` in the specification of a header or a footer.

Now let's suppose that we want to suppress the document title on the first page of a part, chapter or appendix. This is specified as follows: `'first part|chapter|appendix:: ; ; toc|indexlist:: {{topic-title}}; ; {{document-title}}'`.

For now, we have only described a condition about the page sequence being generated: TOC, Index, etc. In fact, a condition may test up to 3 facets of the page being generated:

- The page sequence to which belongs the page being generated.
- Whether the page being generated is part of a one-sided or a two-sided document.
- Whether the page being generated is the first page of its sequence. When the the page being generated is *not* the first page of its sequence, if the page being generated has an odd or an even page number.

```
test_page_layout --> page_layout [ "|" page_layout ]*
```

```
page_layout --> "two-sides" | "one-side"
```

```
test_page_side --> page_side [ "|" page_side ]*
```

```
page_side --> "first" | "odd" | "even"
```

Remember

When the document has one side, there is no difference between even and odd. That is, even, odd, even|odd all simply mean: other than first.

The order of the tests is not significant. For example, `'first part|chapter|appendix'` is equivalent to `'part|chapter|appendix first'`.

Therefore `'first part|chapter|appendix:: ; ; toc|indexlist:: {{topic-title}}; ; {{document-title}}'` reads as follows:

1. Use the empty string for the first page of a part, chapter or appendix.
2. Use the topic title for the pages containing the Table of Contents. This title is "**Table of Contents**", but localized according to the main language of the DITA document being converted.
3. Use the topic title for the pages containing the Index. This title is "**Index**", but localized according to the main language of the DITA document being converted.
4. For any other page, use the title of the DITA document.

Note

Everything explained in this section applies not only to the contents of a column of a header or footer, but also to the proportional width of a column of a header or footer. Example: `-p footer-right-width "first|odd:: 4; ; even:: 1"`.

HTML Parameters

The following table lists the parameters that are common to the stylesheets that generate XHTML or HTML. They apply to the stylesheets that produce XHTML, HTML, Web Help and HTML Help, Eclipse Help and EPUB.

Parameter	Value	Description
add-index-toc	Allowed values are: 'yes' and 'no'. Default value: 'yes'.	Specifies whether an A-Z list should be added at the beginning of the back-of-the-book index.
chain-pages	Allowed values are: 'none', 'top', 'bottom' or 'both'. Default value: 'none'.	Specifies whether a header and/or a footer containing navigation icons should be generated in order to link together all the HTML pages. Note There is no need to specify a value other than 'none' when generating Web Help, HTML Help, Eclipse Help, EPUB and Java™ Help.
chain-topics	Allowed values are: 'yes' and 'no'. Default value: 'no'.	Specifies whether navigation icons should be generated in order to link together all the topics. See also related parameter: ignore-navigation-links . Note There is no need to specify a value other than 'no' when generating Web Help, HTML Help, Eclipse Help, EPUB and Java™ Help.
css	URL. Default value: ''.	Specifies which CSS stylesheet to use. Has priority over the CSS stylesheet specified by the css-name parameter. An end-user wishing to use a custom CSS must typically: <ol style="list-style-type: none">1. Import the <code>basic.css</code> stock stylesheet in its own <code>custom.css</code> as follows: <pre>@import url(basic.css);</pre>2. Copy by hand <code>custom.css</code> to <code>output_dir/res/</code> after <code>ditac</code> has finished its job. Restriction Not supported by the stylesheets that generate EPUB.
css-name	URL basename relative to the directory specified by parameter xsl-resources-directory .	Specifies which CSS stylesheet to use. This CSS stylesheet is expected to be found in the resources directory.

Parameter	Value	Description
	Default value: 'basic.css'; 'java-help.css' when the output format is Java™ Help.	<p>Restriction</p> <p>Not supported by the stylesheets that generate EPUB.</p>
default-table-width	<p>A percentage, typically something like '100%' or '90%'.</p> <p>Default value: '' (as narrow as possible).</p>	The default width of table and simpleteable elements.
external-link-icon-height	<p>Length. A length may have a unit. Default is px.</p> <p>Default value: '10'.</p>	The height of the "opens in new window" icon.
external-link-icon-name	<p>Basename.</p> <p>Default value: 'new_window.png'.</p>	The basename of the "opens in new window" icon. This icon is found in the resources directory.
external-link-icon-width	<p>Length. A length may have a unit. Default is px.</p> <p>Default value: '11'.</p>	The width of the "opens in new window" icon.
format-to-type	<p>Zero or more DITA format/MIME type pairs. Example: "txt text/plain xml application/xml html text/html".</p> <p>Default value: '', which means that DITA xref/@format is <i>not</i> converted to XHTML a/@type.</p>	<p>Allows to map DITA xref/@format to XHTML a/@type.</p> <p>Using default empty value, <xref scope="external" format="txt" href="http://acme.com/info.xyz"> is converted to . The fact that file extension ".xyz" is unknown may cause problems when attempting to navigate or download file "info.xyz" using a Web browser.</p> <p>If -p format-to-type "txt text/plain" is passed to ditac then <xref scope="external" format="txt" href="http://acme.com/info.xyz"> is converted to , which is better.</p>
generator-info	<p>String</p> <p>Default value: 'XMLmind DITA Converter VERSION'.</p>	<p>The name of the software which has been used to create the HTML pages.</p> <p>Specify an empty string if you don't want to have a <meta name="generator" content="XXX"/> element added to your HTML pages.</p>

Parameter	Value	Description
ignore-navigation-links	<p>Allowed values are: 'yes', 'no' and 'auto'.</p> <p>Default value: 'auto' for XHTML and its variants; 'yes' for Web Help, Java Help, HTML Help, Eclipse Help and EPUB</p>	<p>If 'yes', do not generate the navigation links corresponding to <code>topicref</code> attribute <code>collection-type</code>.</p> <p>If 'no', generate the navigation links corresponding to <code>topicref</code> attribute <code>collection-type</code>.</p> <p>If 'auto', generate the navigation links corresponding to <code>topicref</code> attribute <code>collection-type</code>, unless <code>chain-topics=yes</code>.</p>
javascripts	<p>String. List of URLs separated by whitespace.</p> <p>Default value: ''.</p>	<p>The URLs specified in this parameter must point to JavaScript files. These URLs are converted to <code><script></code> XHTML elements added to the <code><html>/<head></code> elements of the XHTML files generated by ditac.</p> <p>Note that an URL may end with <code> ;async</code>, <code> ;defer</code> or a combination of both flags. These flags are translated to the corresponding attributes of the <code><script></code> element. Example:</p> <pre>https://cdn.mathjax.org/mathjax/latest/MathJax.js?config=MML_CHTML;async</pre> <p>is translated to:</p> <pre><script type="text/javascript" async="async" src="https://cdn.mathjax.org/mathjax/latest/MathJax.js?config=MML_CHTML"> </script></pre>
mathjax	<p>Allowed values are: 'yes', 'no' and 'auto'.</p> <p>Default value: 'no'.</p>	<p>Very few web browsers (Firefox) can natively render MathML. Fortunately, there is MathJax. MathJax is a JavaScript display engine for mathematics that works in all browsers.</p> <p>'yes'</p> <p>Add a <code><script></code> XHTML element loading MathJax to the <code><html>/<head></code> elements of all XHTML files generated by ditac.</p> <p>'auto'</p> <p>Same as 'yes', but add <code><script></code> only to generated XHTML files containing MathML.</p> <p>Ignored by all XHTML-based formats but XHTML and Web Help.</p>
mathjax-url	<p>String.</p> <p>Default value: the URL pointing to the MathJax CDN, as recommended in the MathJax documentation.</p>	<p>The URL allowing to load the MathJax engine configured for rendering MathML.</p> <p>Ignored unless parameter <code>mathjax</code> is set to 'yes' or 'auto'.</p>

Parameter	Value	Description
mark-external-links	Allowed values are: 'yes' and 'no'. Default value: 'no'.	Specifies whether an external link should be marked using a "opens in new window" icon.
navigation-icon-height	Length. A length may have a unit. Default is px. Default value: '16'.	The height of a navigation icon.
navigation-icon-suffix	String. Default value: '.png'.	The suffix of a navigation icon. The root names of navigation icons are fixed: <pre>first, first_disabled, last, last_disabled, next, next_disabled, previous, previous_disabled, parent, parent_disabled, child, child_disabled.</pre> For example, if <code>note-icon-suffix = '.svg'</code> , the default resources directory is expected to contain <code>first.svg</code> , <code>first_disabled.svg</code> , <code>last.svg</code> , etc. In principle, there is no need for an end-user to specify any of the <code>navigation-icon-suffix</code> , <code>navigation-icon-width</code> or <code>navigation-icon-height</code> parameters.
navigation-icon-width	Length. A length may have a unit. Default is px. Default value: '16'.	The width of a navigation icon.
screen-resolution	Positive integer. Default value: '96'.	The resolution of the screen in dot per inch (DPI). This resolution is used to convert image dimensions such as 3cm to pixels.
xhtml-mime-type	A MIME type without a parameter such as 'text/html', 'application/xhtml+xml', 'application/xml' or the empty string (''). Default value: 'text/html'.	Applies to all the XHTML-based formats (XHTML, EPUB), not to the HTML-based formats (Web Help, Java™ Help, HTML Help, Eclipse Help). By default ('text/html'), serve XHTML as HTML. Specify 'application/xhtml+xml' if you prefer to serve XHTML as XML. Specify an empty string if you prefer not to generate <code><meta http-equiv="Content-Type" ...></code> . Tip Web browsers such as Firefox or Opera will <i>not</i> render the MathML embedded in XHTML, if this XHTML is served as

Parameter	Value	Description
		HTML. Therefore when your DITA document contains MathML equations, you'll have to generate ".xhtml" files (".html" files won't work) and also, preferably, to specify <code>xhtml-mime-type="application/xhtml+xml"</code> or <code>xhtml-mime-type=""</code> .

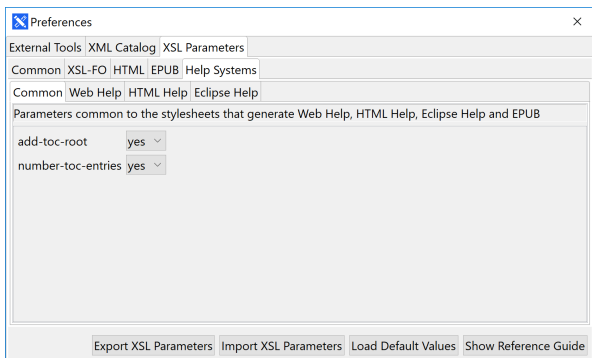
EPUB Parameters

The following table lists the parameters specific to the stylesheets that generate EPUB.

Parameter	Value	Description
<code>cover-image</code>	URI. If the URI is relative, it is relative to the current working directory of the user. No default value.	Specifies an image file which is to be used as the cover page of the EPUB file. This image must be a PNG or JPEG image. Its size must not exceed 1000x1000 pixels. In theory, EPUB 3 also accepts SVG 1.1 cover images.
<code>epub-identifier</code>	String Default value: dynamically generated UUID URN.	A globally unique identifier for the generated EPUB document (typically the permanent URL of the EPUB document).
<code>epub2-compatible</code>	Allowed values are: 'yes' and 'no'. Default value: 'yes'.	Only applies to EPUB 3. By default, the EPUB 3 files generated by ditac are made compatible with EPUB 2 readers. Specify 'no' if you don't need this compatibility.
<code>generate-epub-trigger</code>	Allowed values are: 'yes' and 'no'. Default value: 'yes'.	Only applies to EPUB 3. Specify 'no' if your EPUB 3 reader does not support <code>epub:trigger</code> yet. When <code>generate-epub-trigger=no</code> , ditac generates an <code>onclick</code> attribute containing simple JavaScript code and declares the containing XHTML 5 page as being scripted.

Help Parameters

To access the configuration options for Web Help, HTML Help and Eclipse help, select the **Help Systems** option in the **XSL Parameters** tab of the **Preferences** dialog.



Common Help Parameters

Parameters common to the stylesheets that generate Web Help, HTML Help, Eclipse Help and EPUB

Parameter	Value	Description
add-toc-root	Allowed values are: 'yes' and 'no'. Default value: 'yes'.	If 'yes', add a pseudo TOC entry, bearing the title of the document, containing all the actual TOC entries. Restriction <ul style="list-style-type: none"> Value 'no' is not supported by the stylesheets that generate Eclipse Help. Ignored by the stylesheets that generate Web Help and EPUB.
number-toc-entries	Allowed values are: 'yes' and 'no'. Default value: 'yes' for Web Help, 'no' for the other formats.	If 'yes', number the TOC entries. No effect unless the number parameter is used to specify that topics should be numbered.

Web Help Parameters

The table below lists the parameters specific to the stylesheets that generate Web Help.

Parameters marked using this icon ★ are *pseudo-parameters*. They may or may not be passed to the XSLT stylesheets, but it is important thing to remember that they are also interpreted by ditac itself. As a consequence, you cannot specify them in an XSLT stylesheet which customizes the stock ones.

Parameter	Value	Description
★wh-collapse-toc	Allowed values are: 'yes' and 'no'. Default value: 'no'.	Specifies whether the TOC should be initially collapsed.
★wh-index-numbers	Allowed values are: 'yes' and 'no'.	Specifies whether words looking like numbers are to be indexed.

Parameter	Value	Description
	Default value: 'no'.	Examples of such number-like words: 3.14, 3, 14, 3times4equals12, +1, -1.0, 3px, 1, 2cm, 100%, 1.0E+6, 1,000.00\$.
★ <code>wh-jquery</code>	Relative or absolute URI. A relative URI is relative to the URI of a page of the Web Help. Default value: absolute URI of the corresponding file found on the Google CDN.	Specifies the location of the JavaScript file containing jQuery . Example: 'http://ajax.aspnetcdn.com/ajax/-jquery/jquery-1.10.1.min.js'.
★ <code>wh-jquery-css</code>	Relative or absolute URI. A relative URI is relative to the URI of a page of the Web Help. Default value: absolute URI of the corresponding file found on the Google CDN.	Specifies the location of the CSS stylesheet of jQuery UI . Example: 'http://ajax.aspnetcdn.com/ajax/-jquery.ui/1.10.3/themes/redmond/jquery-ui.css'.
★ <code>wh-jquery-custom-theme</code>	Filename or absolute URI of a .zip file created using jQueryUI ThemeRoller . A relative filename is relative to the current working directory. No default.	Specifies a .zip file created using jQueryUI ThemeRoller containing a custom jQueryUI theme. Example: <code>jquery-ui-1.12.1.custom.zip</code> . The files comprising the custom theme are copied to <code>_wh/jquery/</code> , where <code>_wh/</code> is the directory containing the other Web Help files. Ignored if parameter <code>wh-jquery-css</code> has been used to specify the CSS stylesheet of jQuery UI .
★ <code>wh-jquery-theme</code>	The name of a theme. Examples: 'redmond', 'cupertino'. Default value: 'smoothness'.	Specifies the name of the jQuery UI theme used by the compiler. Ignored if parameter <code>wh-jquery-css</code> has been used to specify the CSS stylesheet of jQuery UI .
★ <code>wh-jquery-ui</code>	Relative or absolute URI. A relative URI is relative to the URI of a page of the Web Help. Default value: absolute URI of the corresponding file found on the Google CDN.	Specifies the location of the JavaScript file containing jQuery UI . Example: 'http://ajax.aspnetcdn.com/ajax/-jquery.ui/1.10.3/jquery-ui.min.js'.

Parameter	Value	Description
★ <code>wh-local-jquery</code>	yes or no. Default value: no.	Specifies whether to copy all jQuery files to the directory containing the other Web Help files. By default, the jQuery files are accessed from the Web (typically from a CDN).
★ <code>wh-layout</code>	The name of a layout. Default value: <code>classic</code> .	Selects a layout for the generated Web Help. For now, only 2 layouts are supported: <code>classic</code> and <code>simple</code> .
★ <code>wh-use-stemming</code>	yes or no. Default value: yes.	Specifies whether stemming should be used to implement the search by contents facility. By default, stemming is used whenever possible, that is, <ul style="list-style-type: none"> when the main language of the document can be determined; when this main language is one of: Danish, Dutch, English, Finnish, French, German, Hungarian, Italian, Norwegian, Portuguese, Russian, Spanish, Swedish, Romanian, Turkish. <p>The main language of the document is specified by the <code>xml:lang</code> attribute found on the root element of DITA map being converted, if not declared it is assumed to be "en".</p>
★ <code>wh-user-css</code>	Relative or absolute URI of a CSS file. A relative URI is relative to the current working directory.	Specifies the user's CSS stylesheet which is to be added to each page of the Web Help. This file is copied to <code>output_directory/_wh/user/</code> . Sample user's CSS: <code>docs/wh_resources/header_footer.css</code> .
★ <code>wh-user-footer</code>	Relative or absolute URI of an XHTML file. A relative URI is relative to the current working directory.	Specifies the user's footer which is to be added to each page of the Web Help. The content of the <code>body</code> element of <code>wh-user-footer</code> is inserted as is in the <code><div id="wh-footer"></code> found in a page of the Web Help. Same remark as for parameter <code>wh-user-header</code> about the resources referenced by a user's footer. Sample user's footer: <code>docs/wh_resources/footer.html</code> .
★ <code>wh-user-header</code>	Relative or absolute URI of an XHTML file. A relative URI is relative to the current working directory.	Specifies the user's header which is to be added to each page of the Web Help. The content of the <code>body</code> element of <code>wh-user-header</code> is inserted as is in the <code><div id="wh-header"></code> found in a page of the Web Help.

Parameter	Value	Description
		<p>If a user's header references resources (e.g. image files), then these resources must either be referenced using absolute URLs or these resources must be found in a user's resource directory and parameter <code>wh-user-resources</code> must be specified.</p> <p>Example:</p> <ul style="list-style-type: none"> • The user's resource directory is called <code>user2/</code> and contains <code>user2/logo100x50.png</code>. • <code>ditac</code> is passed parameters: <code>-p user-resources user2</code> and <code>-p user-header header2.html</code>. • <code>header2.html</code> looks like this: <pre data-bbox="863 770 1391 1104"> <html> ... <body> </body> </html> </pre> <p>Notice the path used to reference <code>logo100x50.png</code>.</p> <p>Sample user's header: <code>docs/wh_resources/header.html</code>.</p>
★ <code>wh-user-resources</code>	<p>Filename or absolute "file:" URI of a <i>directory</i>. URI schemes other than "file" (e.g. "http") are not supported for this parameter. A relative filename is relative to the current working directory.</p>	<p>Specifies a user's resource directory which is to be recursively copied to <code>output_directory/_wh/user/</code>.</p> <p>This directory typically contains image files referenced by the user's header, footer or CSS stylesheet.</p> <p>Sample user's resource directory: <code>wh_resources/header_footer_files/</code>.</p>
<code>whc-index-basename</code>	<p>URL basename.</p> <p>Default value: <code>'whc_index.xml'</code>.</p>	<p>Basename of the Index XML input file of XMLmind Web Help Compiler.</p> <p>In principle, there is no need for an end-user to specify this parameter.</p>
<code>whc-toc-basename</code>	<p>URL basename.</p> <p>Default value: <code>'whc_toc.xml'</code>.</p>	<p>Basename of the TOC XML input file of XMLmind Web Help Compiler.</p> <p>In principle, there is no need for an end-user to specify this parameter.</p>

HTML Help Parameters

The following table lists the parameters specific to the stylesheets that generate HTML Help.

Notice that there should be no need for an end-user to specify any of these parameters.

Parameter	Value	Description
hhc-basename	URL basename. Default value: 'toc.hhc'.	Basename of the HTML Help contents file.
hhp-template	URL basename. Default value: 'template.hhp' resolved against the directory which contains the XSLT stylesheets.	URL of the file containing the template of the HTML Help project file. This plain text file encoded in UTF-8 contains variables such as <code>%compiledFile%</code> , <code>%contentsFile%</code> , <code>%defaultTopic%</code> , etc, which are substituted with their values.
hhx-basename	URL basename. Default value: 'index.hhx'.	Basename of the HTML Help index file.

Eclipse Help Parameters

The following table lists the parameters specific to the stylesheets that generate Eclipse Help

Parameter	Value	Description
plugin-id	String No default value.	An ID uniquely identifying the plug-in, typically a Java-like fully qualified name. Example: 'com.acme.widget.userguide'. Important The subdirectory of <code>plugins/</code> containing the plug-in must have the same basename as the value of parameter <code>plugin-id</code> .
plugin-index-base-name	URL basename. Default value: 'index.xml'.	Basename of the index file.
plugin-name	String No default value.	The name of the plug-in, typically the title of the document. Example: 'ACME Widget User's Guide'.
plugin-provider	String No default value.	The author, company or organization which has contributed the plug-in. Example: 'ACME Corp.'.
plugin-toc-basename	URL basename.	Basename of the table of contents file.

Parameter	Value	Description
	Default value: 'toc.xml'.	
plugin-version	String Default value: '1.0.0'.	The version of the plug-in.

Index

A

add-index-toc, parameter, 23
 add-toc-root, parameter, 28
 appendix-number-format, parameter, 6

B

base-font-size, parameter, 11
 body-bottom-margin, parameter, 11
 body-font-family, parameter, 12
 body-top-margin, parameter, 12
 {{break}}, page header/footer variable, 21

C

cause-number-format, parameter, 6
 center, parameter, 6
 chain-pages, parameter, 23
 chain-topics, parameter, 23. *See also*
 ignore-navigation-links, parameter
 {{chapter-title}}, page header/footer variable, 20
 choice-bullets, parameter, 12
 cover-image, parameter, 27
 css, parameter, 23
 css-name, parameter, 23

D

default-table-width, parameter, 24
 {{document-date}}, page header/footer variable, 20
 {{document-title}}, page header/footer variable, 20

E

EPUB 2, output format, 6
 epub2-compatible, parameter, 27
 EPUB 3, output format, 6, 27
 epub-identifier, parameter, 27
 equation-block-equation-width, parameter, 12
 equation-block-number-width, parameter, 12
 equation-number-after, parameter, 6
 equation-number-before, parameter, 6
 extended-toc, parameter, 6
 external-href-after, parameter, 12
 external-href-before, parameter, 12
 external-link-icon-height, parameter, 24
 external-link-icon-name, parameter, 24
 external-link-icon-width, parameter, 24
 external-resource-base, parameter, 6

F

footer-center, parameter, 12
 footer-center-width, parameter, 12
 footer-height, parameter, 13
 footer-left, parameter, 13
 footer-left-width, parameter, 13
 footer-right, parameter, 13
 footer-right-width, parameter, 13
 footer-separator, parameter, 13
 format-to-type, parameter, 24

G

generate-epub-trigger, parameter, 27
 generator-info, parameter, 24

H

header-center, parameter, 13
 header-center-width, parameter, 13
 header-height, parameter, 14
 header-left, parameter, 14
 header-left-width, parameter, 14
 header-right, parameter, 14
 header-right-width, parameter, 14
 hhc-basename, parameter, 32
 hhp-template, parameter, 32
 hhx-basename, parameter, 32
 highlight-source, parameter, 6
 hyphenate, parameter, 14

I

ignore-navigation-links, parameter, 25. *See also*
 chain-topics, parameter
 {{image(URI)}}, page header/footer variable, 21
 imagemap, 17
 index-column-gap, parameter, 14
 index-range-separator, parameter, 7

J

javascripts, parameter, 25
 justified, parameter, 14

L

link-auto-text, parameter, 7
 link-bullet, parameter, 14

M

mark-external-links, parameter, 26
 mark-important-steps, parameter, 8
 MathJax, 25
 mathjax, parameter, 25
 mathjax-url, parameter, 25
 MathML, 25
 menucascade-separator, parameter, 14

N

navigation-icon-height, parameter, 26
 navigation-icon-suffix, parameter, 26
 navigation-icon-width, parameter, 26
 note-icon-height, parameter, 15
 note-icon-list, parameter, 7
 note-icon-suffix, parameter, 15
 note-icon-width, parameter, 15
 number, parameter, 7
 number-separator1, parameter, 7
 number-separator2, parameter, 8
 number-toc-entries, parameter, 28

O

outputclass, attribute, 7

P

page-bottom-margin, parameter, 15
 {{page-count}}, page header/footer variable, 20
 page-height, parameter, 15
 page-inner-margin, parameter, 15
 {{page-number}}, page header/footer variable, 20
 page-orientation, parameter, 16
 page-outer-margin, parameter, 16
 page-ref-after, parameter, 16
 page-ref-before, parameter, 16
 {{page-sequence}}, page header/footer variable, 21,
 22
 page-top-margin, parameter, 16
 page-width, parameter, 16
 paper-type, parameter, 16
 part-number-format, parameter, 8
 pdf-outline, parameter, 17
 plugin-id, parameter, 32
 plugin-index-basename, 32
 plugin-name, parameter, 32
 plugin-provider, parameter, 32
 plugin-toc-basename, parameter, 32
 plugin-version, parameter, 33
 Preferences dialog, 4
 prepend-chapter-to-section-number, parameter, 8

Publish DITA MAP dialog, 2

R

remedy-number-format, parameter, 8

S

screen-resolution, parameter, 26
 {{section1-title}}, page header/footer variable, 20
 show-draft-comments, parameter, 8
 show-external-links, parameter, 17
 show-imagemap-links, parameter, 17
 show-link-page, parameter, 17
 show-xref-page, parameter, 17
 syntax highlighting, 6

T

text-file-encoding, parameter, 8
 title-after, parameter, 8
 title-color, parameter, 17
 title-font-family, parameter, 17
 title-page, parameter, 9
 title-prefix-separator1, parameter, 9
 {{topic-title}}, page header/footer variable, 20, 21
 troubleSolution-number-format, parameter, 8
 two-sided, parameter, 18

U

ul-li-bullets, parameter, 18
 unordered-step-bullets, parameter, 18
 use-multimedia-extensions, parameter, 18
 use-note-icon, parameter, 10

W

watermark, parameter, 18
 watermark-image, parameter, 10
 whc-index-basename, parameter, 31
 wh-collapse-toc, parameter, 28
 whc-toc-basename, parameter, 31
 wh-index-numbers, parameter, 28
 wh-jquery, parameter, 29
 wh-jquery-css, parameter, 29
 wh-jquery-custom-theme, parameter, 29
 wh-jquery-theme, parameter, 29
 wh-jquery-ui, parameter, 29
 wh-layout, parameter, 30
 wh-local-jquery, parameter, 30
 wh-user-css, parameter, 30
 wh-user-footer, parameter, 30
 wh-user-header, parameter, 30

wh-user-resources, parameter, 31

wh-use-stemming, parameter, 30

X

XFC, XSL-FO processor, 10

xhtml-mime-type, parameter, 26

xref-auto-text, parameter, 10

xsl-resources-directory, parameter, 10